

14 November

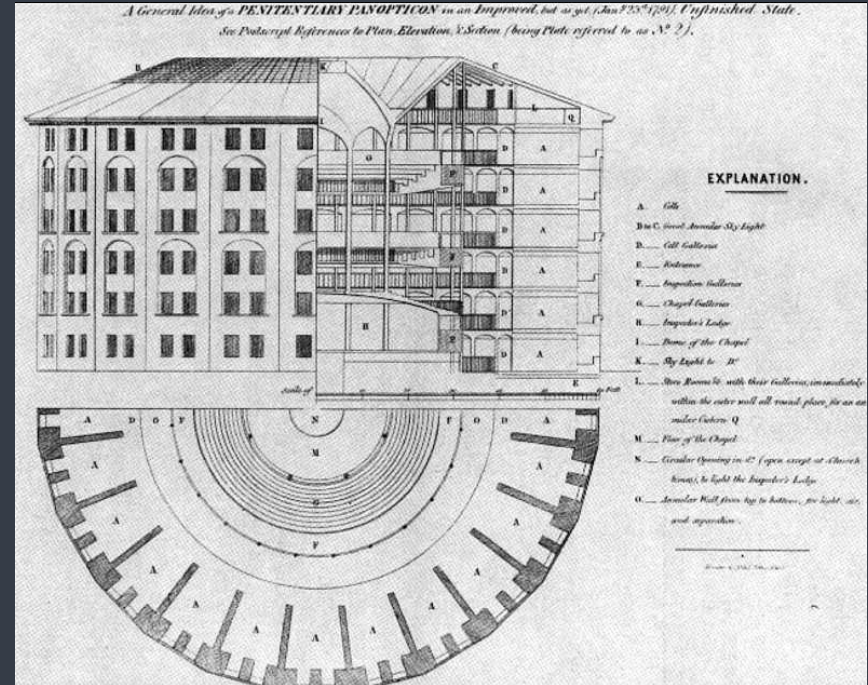
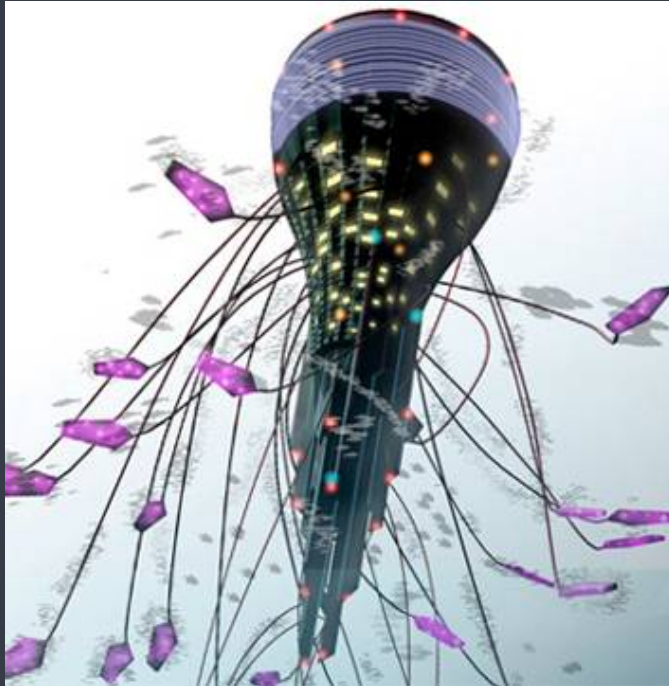



The Social and cultural issues around new sources for Data Collection, Storage and Usage (Un)Plugging Data in Smart City Regions

CATAPULT
Future Cities

Dr Paul Cowie
ESRC Research
Fellow

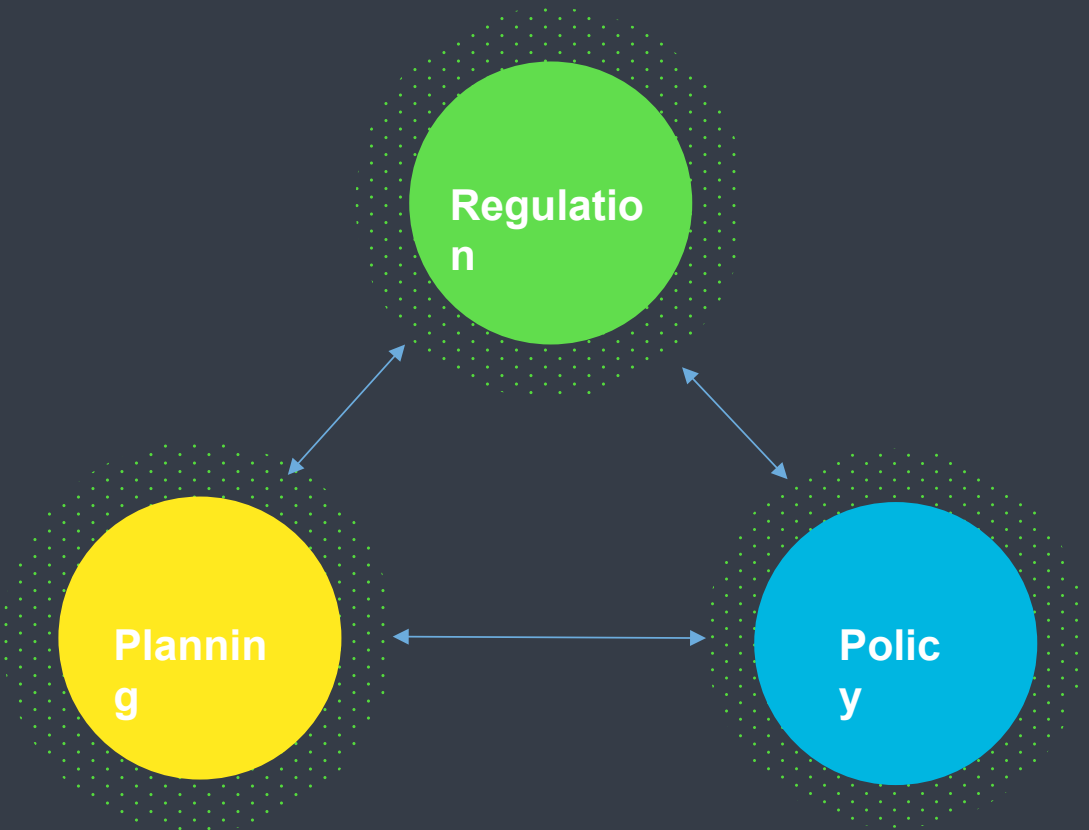
What are the issues?



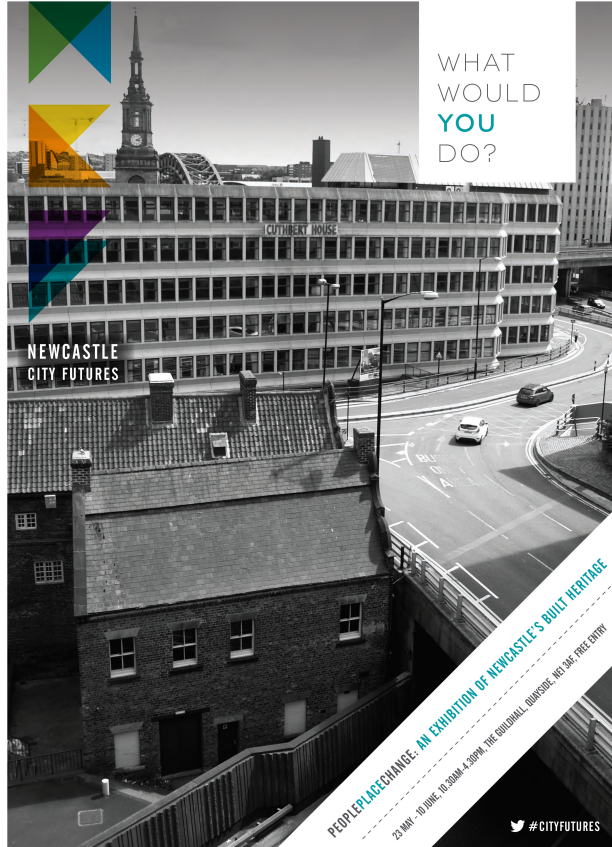


“individuals need to be engaged on the issue as citizens (deliberating on the conditions and safeguards), as well as consumers (agreeing or disagreeing to terms of service).”

The Problem of Governance



Planning



WHAT
WOULD
YOU
DO?

NEWCASTLE
CITY FUTURES

PEOPLEPLACECHANGE: AN EXHIBITION OF NEWCASTLE'S BUILT HERITAGE

23 MAY - 10 JUNE, 10.30AM - 4.30PM, THE GUILDHALL, QUAYSIDE, NE1 2AG, FREE ENTRY

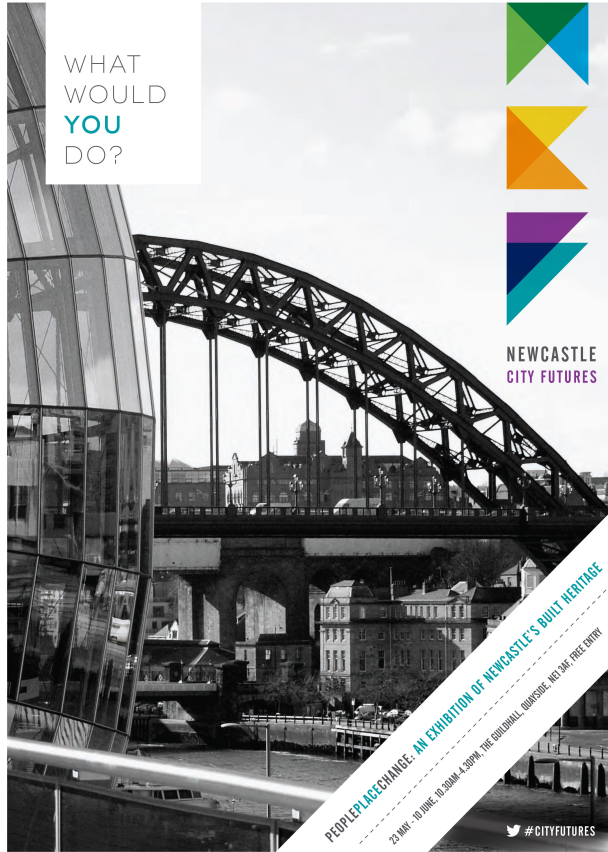
#CITYFUTURES

Newcastle University
School of Architecture Planning & Landscape

RTPI 2014
The Royal Town Planning Institute

FARRELLS

NEWCASTLE CITY FUTURES



WHAT
WOULD
YOU
DO?

NEWCASTLE
CITY FUTURES

PEOPLEPLACECHANGE: AN EXHIBITION OF NEWCASTLE'S BUILT HERITAGE

23 MAY - 10 JUNE, 10.30AM - 4.30PM, THE GUILDHALL, QUAYSIDE, NE1 2AG, FREE ENTRY

#CITYFUTURES

Newcastle University
School of Architecture Planning & Landscape

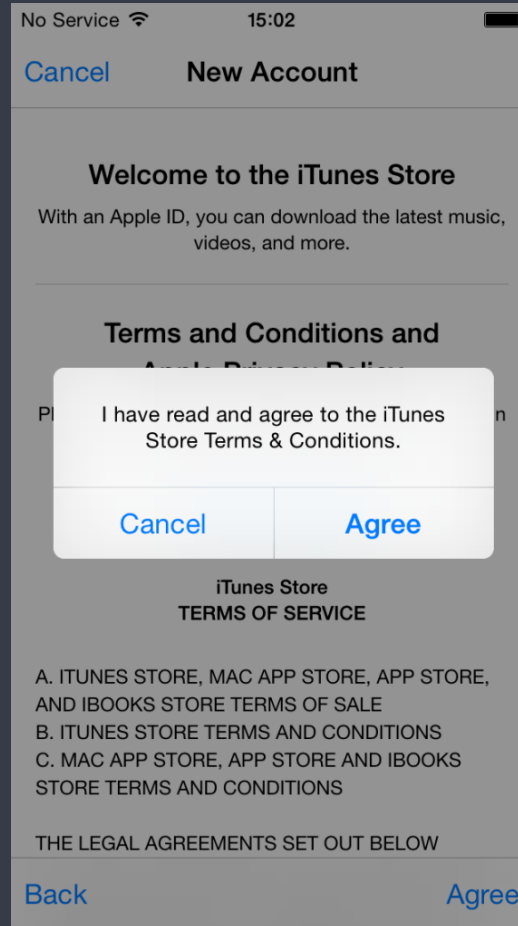
RTPI 2014
The Royal Town Planning Institute

FARRELLS

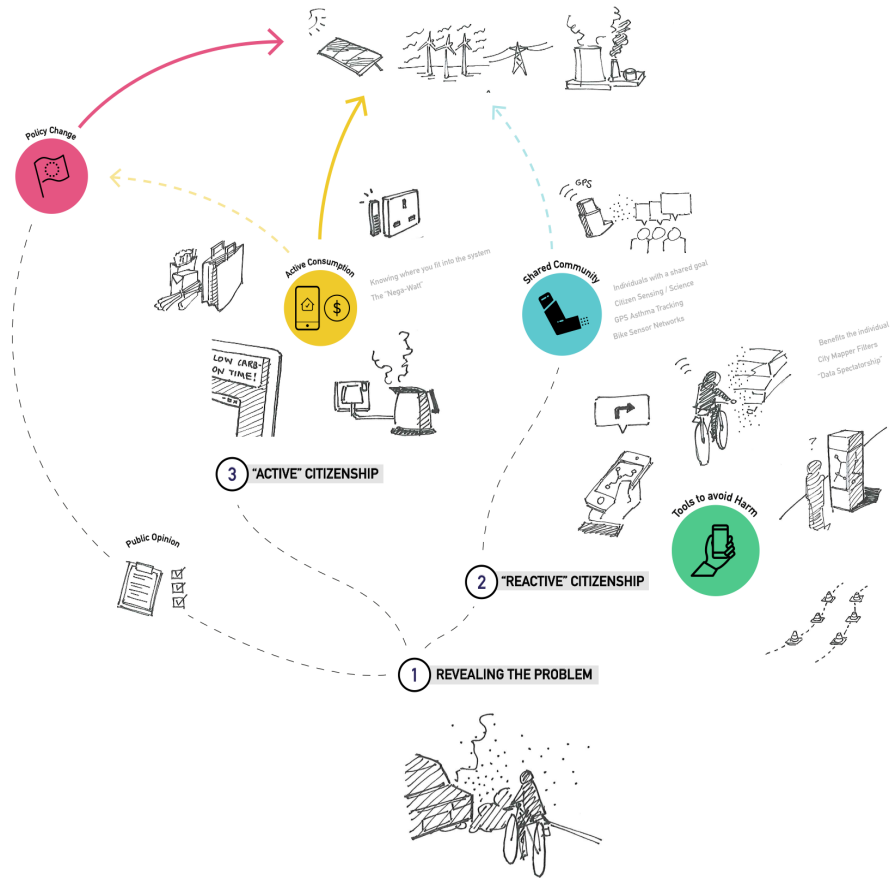
NEWCASTLE CITY FUTURES

Regulation

- Issues of:
 - Necessity
 - Privacy-Friendly
 - Default
 - Aggregation
 - Fairness
- **Self-regulation**
- **Co-regulation**
- **Legislation**



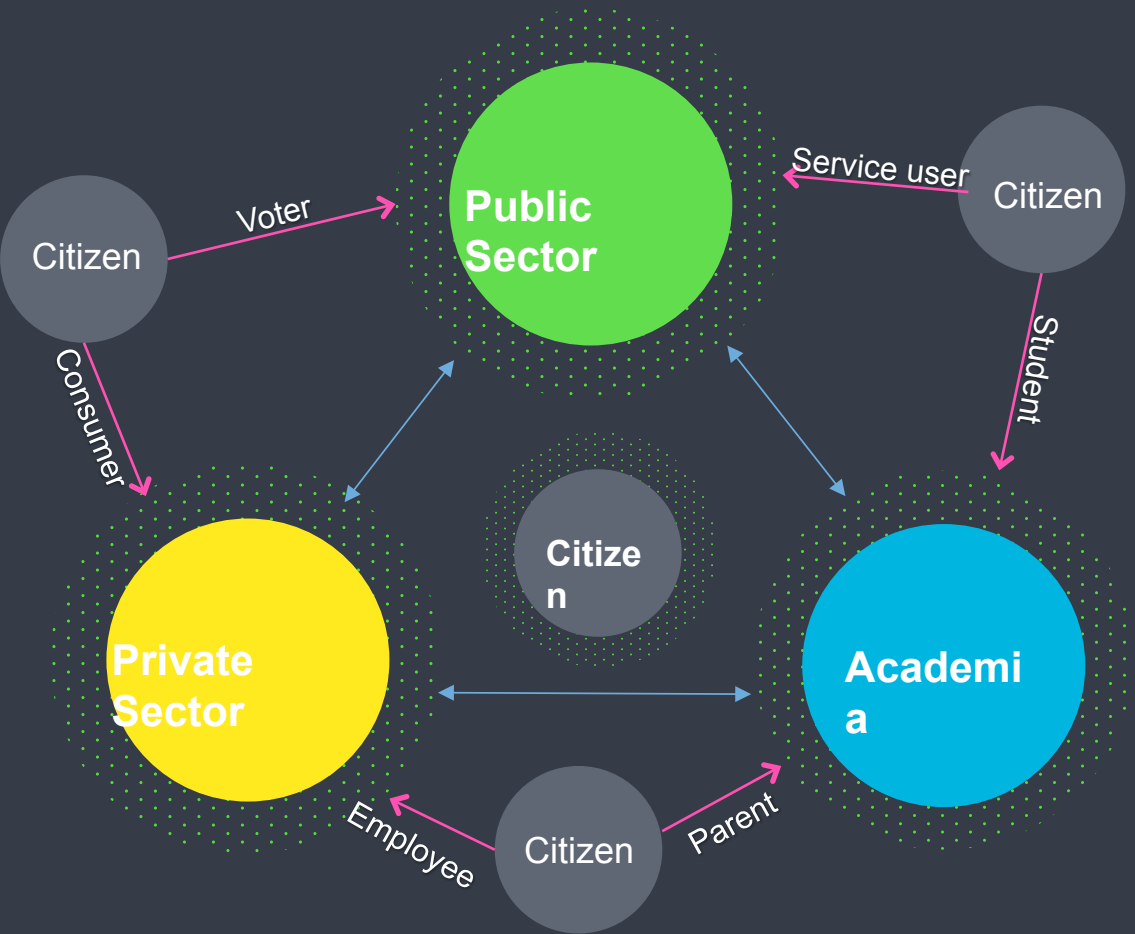
Policy




A wide-angle, long-exposure photograph of a busy train station concourse. The ceiling is high with a complex network of steel beams and numerous hanging lights. A large clock is visible on the left. People are seen moving through the space, some blurred due to motion. In the background, there are signs for 'Waterloo East' and 'Departures'. A large digital display board on the right shows train schedules. The overall atmosphere is one of a major transportation hub.

Human Centered Smart Cities

The triple & quadruple helix



A photograph of a busy city street, likely in Lisbon, Portugal. In the foreground, a group of pedestrians is walking on the sidewalk. A yellow tram with the number 28 and the destination 'PRAZERES' is traveling down the street. A red car and a white car are also visible. The street is lined with historic buildings and has tram tracks. A large, semi-transparent dark blue circle is overlaid on the center of the image, containing white text. The circle is decorated with a pattern of small green dots and has two horizontal blue lines above and below the text.

“focus of our concern for cities... is shifting from a focus on space to one on time. The bias has been to immediate solutions to existing problems”
(Batty, 2016: 324)